



NeoMetrix
Technologies, Inc.

Tech Brief 03-03-027

Digitizing Seashells



Figure 1 – StarFish

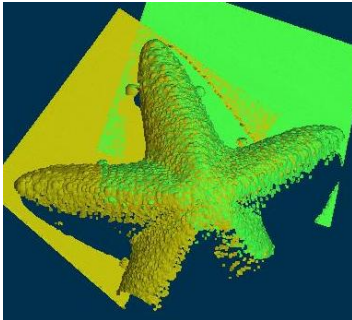


Figure 2 – Laser Scanned Data

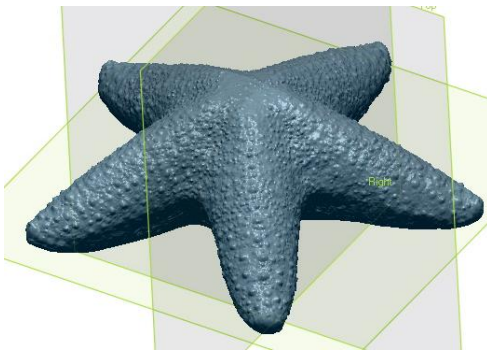


Figure 3 – Final STL mesh

Problem:

Seashells and other sea forms are often taken home as keepsakes. The customer wanted to create a line of containers that were exact replicas of sea forms but scaled much larger. (Figure 1 Starfish shown)

Traditional Method:

Hire an artist to create a scaled model of desired shape. Unfortunately the original size that was determined may not be adequate.

NeoMetrix Solution:

- Original part is Laser scanned in house using the Konica Minolta Range 7 scanner. (accuracy of .0015") (Figure 2)
- Scan Data is registered, merged, and aligned in Rapidform XOR to produce a polygon mesh. (Figure 3)
- Mesh is then scaled and then offset to give the part an actual thickness.

NeoMetrix Advantage:

- Feasible to obtain quality data previously unavailable by other means
- Accurate model in STL format.
- Model is then ready to be prototyped to be approved.